

# The new lockable MxM with removable latch door



## Features

*The MxM Expresscard/34 is a fully integrated, single chip solution capable of ultra high performance operation. Average sustained transfer rates exceeding 35MB/s are possible if the media and host can support those rates.*

*Improved internal and external design.*

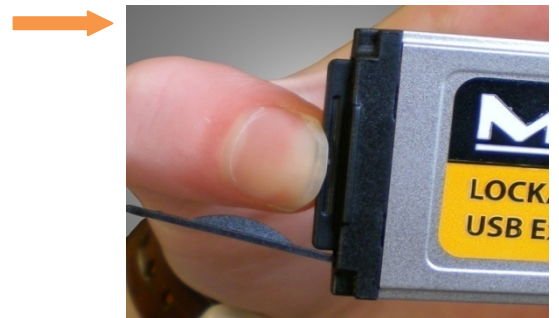
*Optimised for low latency interrupt handling.*

## Mounting and dismounting the SDHC memory card tips



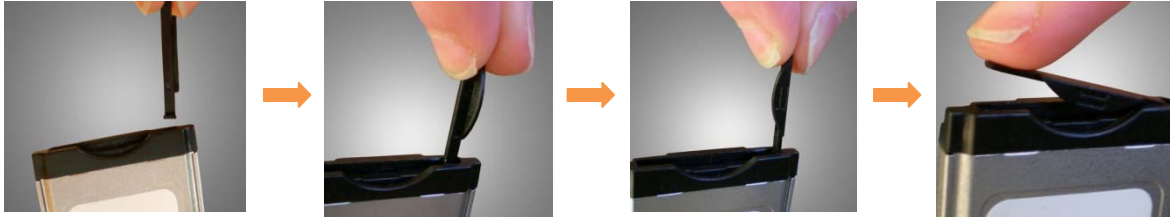
← In order to open the latch on the Expresscard34 reader, the most proficient way is to use your thumb on the side and pull the chamber door open outwards.

Once the SDHC memory card is inserted, a gentle push will ensure the card will be locked in.



← To disengage the card from the MxM adapter, push the card downwards for the spring mechanism to eject the card.

Note, the design of the new MxM's latch permits the door to be fully disengaged if excessive force has been applied. It is easily reassembled into position by inserting the latch and turning it 90° clockwise back into the locking position.



**Tested working media with the new MxM 16GB:**

- ATP Pro Class 6
- RAW Hoodman Class 6
- SanDisk Extreme class 10
- Transcend Class 6 (*reports of some inconsistencies in manufacturing*)
- SanDisk Class 4 (*reports of some inconsistencies in manufacturing*)
- SanDisk HD 120 mins

**Tested working media with the new MxM 32GB:**

- SanDisk Extreme class 10
- ATP Pro Class 6
- Silicon Power Class 6
- Transcend Class 6 (*reports of some inconsistencies in manufacturing*)
- SanDisk Class 4